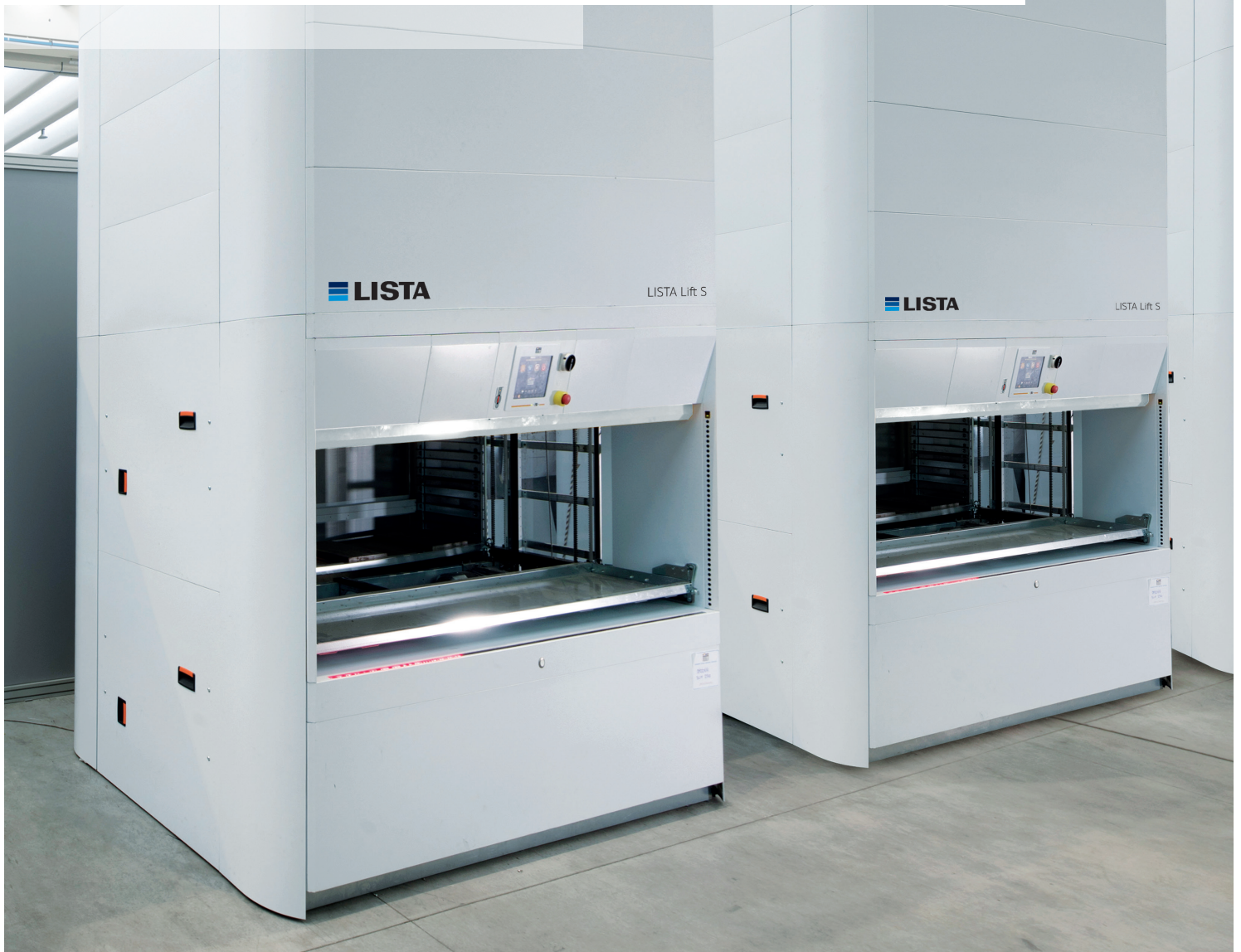


THE SPACESAVER OF THE STORAGE LIFT WORLD

THE LISTA LIFT S



HUGE POSSIBILITIES IN A MINIMUM OF SPACE

At only 1.6 m deep, the LISTA Lift S is the ultimate storage lift: as capable of bearing loads as something bigger, yet as compact and space-saving as a paternoster. The overall capacity is up to 25 000 kg at 7 m high. It has optimal capacity. The system enables the trays to position things dynamically and flexibly within the lift, so that you can make the most of every centimetre of its storage space.

The LISTA Lift S is similarly efficient when it comes to maintenance and energy consumption. At less than 1.2 kW/h, the system represents an impressively cost-effective solution. It also requires minimal care and maintenance: the drive system does not need to be lubricated and is very easy to install and adjust thanks to the self-centring pulleys. The extensive range of accessories allows safe and reliable storage of all sorts of materials and products. What this means: The LISTA Lift S gives you maximum efficiency and flexibility, even with a very limited footprint.





**+ Reduced footprint,
optimum storage density**

- from just 2.9 m² space requirement and 1.6 m depth
- additional load of up to 25 000 kg
- dynamic positioning of the trays allows maximum utilisation of space

+ Great time savings and ergonomics

- optimised picking times
- quick access
- short transport distances, optimised processes
- Material comes to the employee, so minimal physical stress

**+ Reduced error frequency,
improved stock control**

- automatic system, records picking activities
- easy to operate
- guided, controlled access to individual trays

+ Maximum flexibility

- wide range of accessories: partition plates, partition panels, scanners, put-to-light, etc.
- suitable for three-phase voltage of 230 V

**+ Minimal maintenance,
low power consumption**

- lubrication-free drive belt system
- Electricity requirement less than 1.2 kW/h

+ Efficient management and top service

- software-based control with the LISTA Warehouse Management System
- compatible with all conventional ERP systems
- custom planning and adaptation
- training and maintenance concepts
- 24 h service guarantee

EASY TO INSTALL, EVEN EASIER TO OPERATE THE LISTA LIFT S IN PRACTICE



Installation

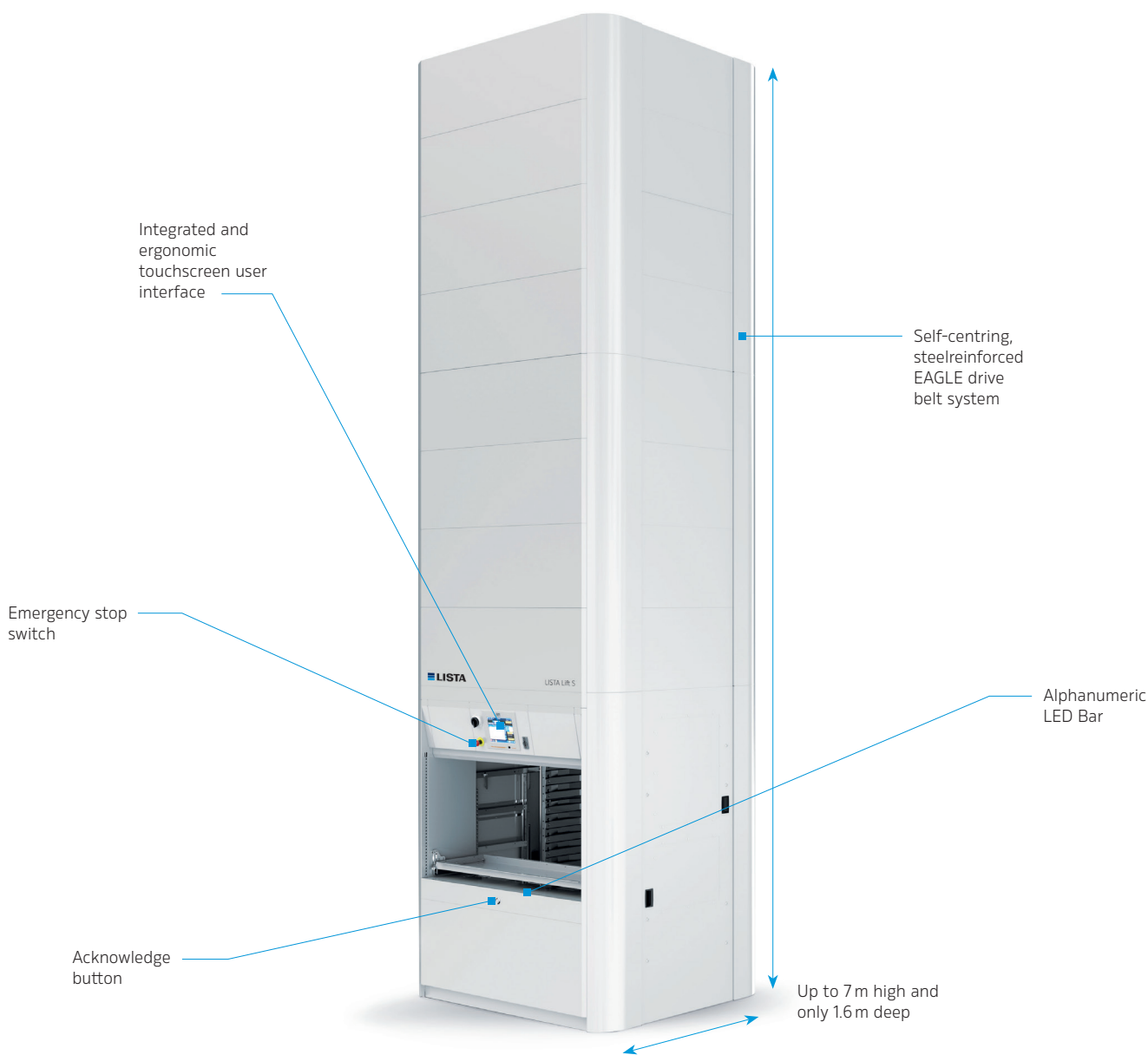
The LISTA Lift S consists of a pre-assembled base, which enables quick installation and easy operation. As a rule, the storage system is ready for use within 48 hours of being delivered to your building. The controls can be implemented in three stages: In addition to easy access management, you can also use the flexible LISTA WMS warehouse management system. In addition, the Slim Lift can be quickly integrated into your ERP system.

Operation

Operating the LISTA Lift S is just as easy as installing it: a user-friendly touchscreen user interface and intuitive control elements integrated into the operating opening, such as acknowledge buttons of LED lamp strips, mean that you are bound to get to grips with the system within a matter of days. You'll be amazed at how quickly picking times and error rates can be reduced with the LISTA Lift S.

ADVANTAGES IN FACTS AND FIGURES

THE TECHNICAL FEATURES OF THE LISTA LIFT S



Tray width	1300 / 1900 / 2500 mm
Tray depth	425 mm
Tray wall height	45 mm
Appliance width	1685 / 2285 / 2885 mm
Appliance depth	1675 mm
Appliance height	variable from 2400 up to 7000 mm
Height increments	100 mm
Storage grid	25 mm
Net load per tray	350 kg
Gross load	up to 25000 kg
Max. Stored goods height	650 mm

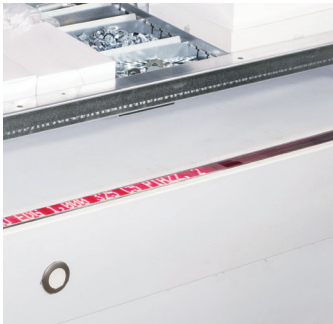
Tray access height	835 mm
Speed	up to 190 cycles per hour (depending on configuration)
Operating interface	10.4-inch touchscreen industry console (co-pilot)
Number of extractions	1
Type of extraction	internal with single extension
Min. power consumption	1.2 kW/h for Slim Lift 1.3, H=7000 mm
Power supply	230V single-phase and 400V three-phase
Certification	TÜV-GS
Drive	EAGLE belt drive system, self-centring, steel-reinforced

ADDED FLEXIBILITY LISTA LIFT S ACCESSORIES



Tray accessories

Divide the trays of your LISTA Lift S flexibly with accessories such as slotted walls, partition panels and more, for secure and reliable storage of a wide variety of materials and products, from loose parts to boxes, bottles and cartons. The wide range of accessories allows you to divide the space as necessary to fit the goods to be stored at any time.



Visual operating aids

Optical operating aids such as LED strips or laser pointers allow you to identify the necessary stored goods quickly and thus help to significantly speed up picking processes. They assist the operator in their search for items in the trays and thus reduce the error rate significantly.



Access control

Various scanners protect the stored material against unauthorised access. This allows users to be created with individual access rights to trays and materials or compartments. Together with access via the console, you can also log in using a personalised tool, which makes operation even faster.



Productivity and security

Other accessories include 1D or 2D barcode readers for fast scanning of the stored goods without the need for manual checks, an integratable put-to-light, allowing you to process multiple or different orders at the same time, and a matching ESD system to protect sensitive goods.

LISTA AS A PARTNER WELCOME TO THE NO.1

LISTA offers organisation. With success, experience and system. For more than 70 years, we have offered our customers concepts for more organised and efficient working. Because we offer them more than just a high-quality product, competent advice and a wide range

of services: the LISTA system creates perfect interlocking solutions for smooth work processes. And this makes us a leading partner in the area of workspace and storage equipment worldwide.



+ Comprehensive range
from A for access control to W for workstation systems

+ One system, countless possibilities
through freely combinable modules

+ Bespoke solutions
for customers with specific requirements

+ Maximum flexibility
with a choice of colours,
configuration options and more

+ Wide range of services
such as training, assembly, marking, etc.

+ Expert planning
Individual and precisely fitting

+ First-class references
from more than 100,000 prestigious companies worldwide

+ Worldwide distribution and service network
for unlimited customer service



www.lista.com